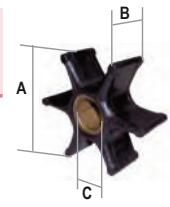


IMPULSOR • IMPELLER • GIRANTE

FUERABORDA
OUTBOARD
FUORIBORDO



RECMAR®



FORCE



REF	CEF	A (mm)	B (mm)	C (mm)	PALAS BLADE PALE	CASQUILLO KEY TYPE CHIAVETTA	HP	FORCE
REC47-43026Q02	500301	89	32,5	22,4	6	P	115, 125, 150, 175, 200, 225 HP	47-43026T2 47-80363 1T 47-89984 T4 47-F694065 47-30221
REC47-89984T4	500313	60	33,8	22,2	6	P	85, 90, 120, 125, 150 HP	47-F436065-2 47-F462065
REC47-F436065	500334	57	14,8	12,85	6	J	9,9 & 15HP	47-F523065-1 47-803630T
REC47-F462065	500335	57	15	14,3	10	J	20, 30, 35 HP	
REC47-803630T	500390	57	29,6	20,9	6	J	75-140HP	



REC47-43026Q02



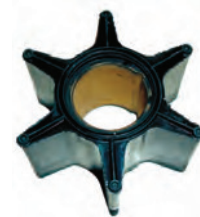
REC47-89984T4



REC47-F436065



REC47-F462065



REC47-803630T

HONDA

REF	CEF	A (mm)	B (mm)	C (mm)	PALAS BLADE PALE	CASQUILLO KEY TYPE CHIAVETTA	HP	HONDA
REC47-43026Q02	500301	89	32,5	22,4	6	P	75-90HP	19210-ZW1-003 19210-ZW1-B02 19210-ZW1-B03 19210-ZW1-B04
REC19210-ZW1-B02	500337	87,8	31	23,35	6	J	75, 90, 115, 130, 135, 150 HP	19210-ZV5-003
REC19210-ZV5-003	500338	55,75	20	17,2	6	J	35, 40, 45, 50 HP	19210-ZV7-003
REC19210-ZV7-003	500339	55,75	20	17,2	6	J	20, 25, 30 HP	19210-ZW9-013 19210-ZW9-003
REC19210-ZW9-013	500347	45,6	14,8	13	6	J	8D, 9.9HP	19210-ZY3-003
REC19210-ZY3-003	500391	89	31,3	26	6	J	175-225HP	19210-881-003 19210-881-A01
REC19210-881-003	500327	41	23	14,2	8	H	5, 7,5, 8 & 10 HP	19210-ZV4-013
REC19210-ZV4-013	500328	41	27,5	14,2	6	H	DF9,9, BF15, AH, AK, AM, AW, series 14ZV40M	19210-ZV4-651
REC19210-ZV4-651	500343	41	27,5	14,1	6	J	8, 9,9 & 15 HP	

RECMAR®



REC47-43026Q02



REC19210-ZW1-B02



REC19210-ZV5-003



REC19210-ZV7-003



REC19210-ZW9-013



REC19210-ZY3-003



REC19210-881-003



REC19210-ZV4-013



REC19210-ZV4-651

CÁMARA MOTOR / CASCO • ENGINE CAMERA / HULL • CAMERA MOTORE / SCAFO

RECAMBIOS MARINOS

MERCURY



REF	CEF	A (mm)	B (mm)	C (mm)	PALAS BLADE PALE	CASQUILLO KEY TYPE CHIAVETTA	HP	MERCURY
REC47-59362Q01	500109	66,5	50,6	19,25	8	H		47-59362T1
REC47-862232A2	500159	66,5	50,6	15,25	8	M		47-862232A2
REC47-43026Q02	500301	89	32,5	22,4	6	P	50, 55, 60, 70, 75, 80, 90, 115, 200, 225HP	47-43026T2 47-430262Q02
REC6G1-44352-00	500302	40	18	11,9	6	J	6HP	47-11590 M
REC47-22748	500309	32	14,4	11,6	6	P, 2	3,5, 3,9, 5, 6HP	47-22748
REC47-89981	500310	32	14,4	11,6	6	P	4,5, 7,5, 9,8HP	47-89981 47-65957
REC47-89982	500311	51,5	19	16	6	P	20HP	47-89982 47-65958
REC47-89983T	500312	51,8	19	19	6	P	35, 40, 45, 50, 55, 60, 70HP	47-89983T 47-65959
REC47-89984T4	500313	60	33,8	22,2	6	P	75, 80, 90, 115, 135, 140, 150, 175, 200, 220, 225HP	47-89984 47-65960
REC47-89980	500314	32	14,4	11	6	P	3,5, 3,6, 4, 4,5, 7,5, 9,8, 9,9HP	47-89980 47-68988
REC47-8508910	500315	73	12,6	16	6	P	18, 20, 25, 30, 40, 45, 50HP	47-85089-3 47-85089-10 47-42038
REC47-420382	500318	58,8	11,7	13	6	P	6-15HP	47-42038-2 47-42038Q02
REC662-44352-01	500321	40	22	14	6	J	8A, 8B	47-95611M
REC646-44352-01	500324	47,5	13,7	11,15	6	J	2A, 2B	47-80395M
REC689-44352-02	500326	69,5	12,8	16,15	6	J	20C, 25C, 30A	47-84797M
REC47-161543	500377	33,6	14,3	10,25	6	P	3,3, 4, 5HP	17-16154-3
REC47-19453T	500378	78,2	25,15	19,25	6	P	50, 55, 60HP	47-19453T
REC47-803630T	500390	57	29,6	20,9	6	J	75-140HP	47-803630T
REC47-952892	500396	41	14	12	6	Q	2-3,3HP	47-95289-2 47-114812



REC47-59362Q01



REC47-862232A2



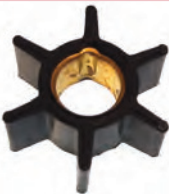
REC47-43026Q02



REC6G1-44352-00



REC47-22748



REC47-89981



REC47-89982



REC47-89983T



REC47-89984T4



REC47-89980



REC47-8508910



REC47-420382



REC662-44352-01



REC646-44352-01



REC689-44352-02



REC47-161543



REC47-19453T



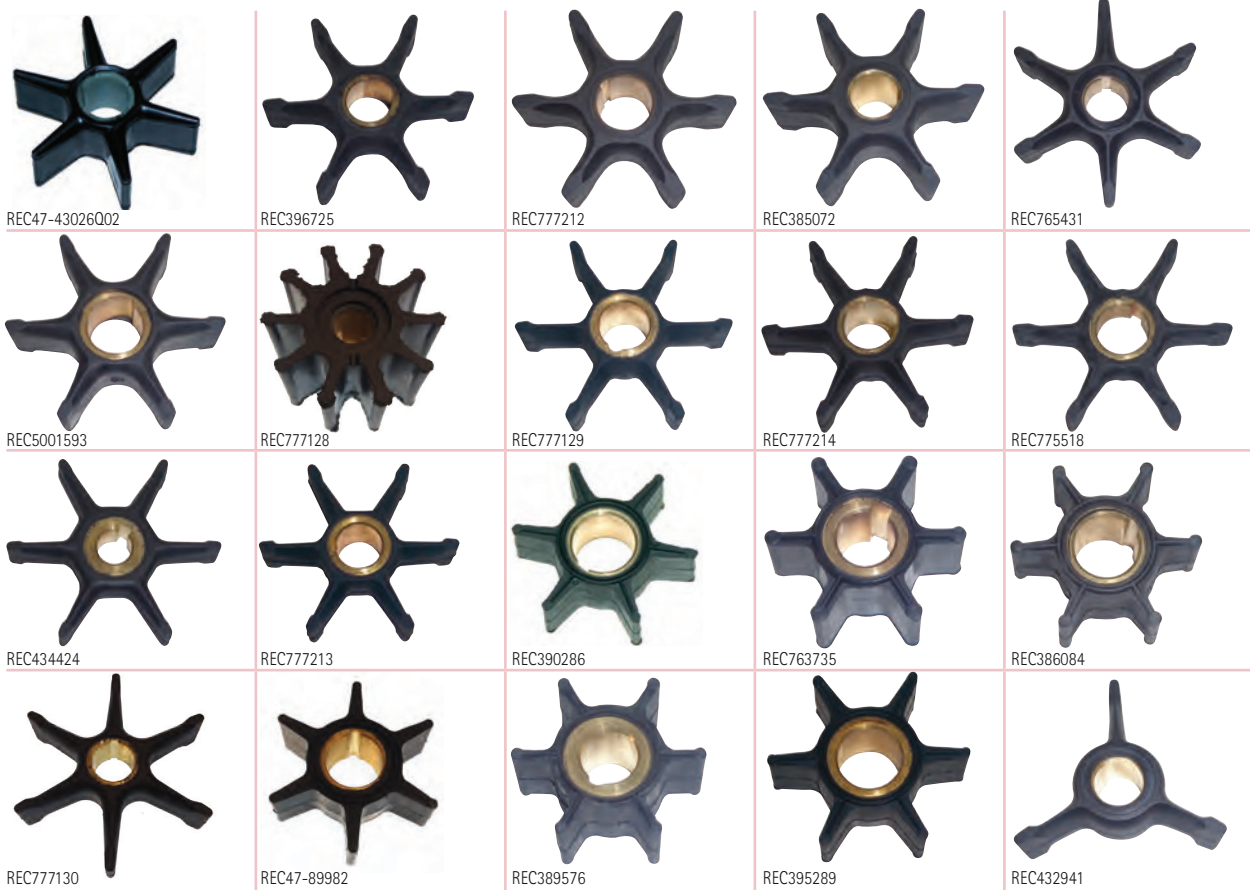
REC47-803630T



REC47-952892

OMC

REF	CEF	A (mm)	B (mm)	C (mm)	PALAS BLADE PALE	CASQUILLO KEY TYPE *****	HP	OMC
REC47-43026Q02	500301	89	32,5	22,4	6	P		399289 391538 396725
REC396725	500303	91,5	25,4	19,13	6	O	40, 60, 65, 70, 75 HP	432594 437080 389642 777212
REC777212	500305	89	31,9	22,32	6	J	V4 & V6	389642 777212
REC385072	500306	88	32	19	6	J	85-125 HP	385072
REC765431	500307	91,5	25,4	19,25	6	J	55, 60, 65, 70, 75 HP	382547 765431 395864 397131 435821
REC5001593	500308	89	31,9	22,4	6	O	V4 & V6	983895 777128
REC777128	500317	58,5	41	12,7	10		200-460 HP	389589 777129
REC777129	500345	69,2	22,3	16	6	P	40, 50, 55, 60 HP	396809 777214
REC777214	500346	70	22,3	16,04	6	O	40, 48, 50 HP	377178 775519
REC775518	500349	69	12,8	14,1	6	J		277181 434424 375638
REC434424	500350	69	12,8	11	6	J	3, 4, 5, 5.5, 6, 7.5 HP	389642 775518 377230 777213
REC775518	500351	69	12,8	12,7	6	J		390286
REC777213	500352	70	22,3	16,04	6	J	35, 40, 50, 55 HP	387361 763735
REC390286	500353	51,5	19	17,5	6	J	40 HP	386084
REC763735	500354	38,4	17,9	11,2	6	J	4 HP	397475 777130
REC386084	500355	38,6	17,6	12,7	6	P	9.9-15 HP	388702
REC777130	500356	107,8	25,4	22,3	6	J		389576
REC47-89982	500357	51,5	19,05	16	6	P	25 HP	395289
REC389576	500358	38,38	17,9	11,2	6	P	4.5, 6, 7, 8HP	432941
REC395289	500370	51	19	16	6	O	20, 25, 30, 35 HP	
REC432941	500372	91,3	25,4	19,13	3	O	40-50 HP	



CÁMARA MOTOR / CASCO • ENGINE CAMERA / HULL • CAMERA MOTORE / SCAFO



SUZUKI



REF	CEF	A (mm)	B (mm)	C (mm)	PALAS BLADE PALE	CASQUILLO KEY TYPE CHIAVETTA	HP	SUZUKI
REC47-89983T	500312	51,8	19	19	6	P	DT40, DE55, DF65J-X	17461-95201 17461-93901
REC17461-93903	500329	39,3	22	13,2	6	J	DT9.9, DT15, DF8A, DF8AR, DF9.9A, AR DF9.9-DF15	17461-93902 17461-93903
REC17461-98503	500336	41	14	10,17	6	Q	DT4, DT5, DT6, DT8, DF4, DF5, DF6 DT2.2K1-K5	17461-98501 17461-98502 17461-98503
REC17461-95300	500360	67,2	19,3	20,1	6	J	DT75, DT85J-Y	17461-95300
REC17461-94700	500361	67,2	19,3	17,1	6	J	DT55, DT65J-X	17461-94700 17461-94701
REC17461-96312	500362	67,5	16,2	17,1	6	J	DT20, DT25, DT30, DT35, DT40, DT40C DF20, DF25, DF30, DF40, DF50, DF60	17461-96301 17461-96311 17461-96312 17461-96310
REC17461-87E12	500365	78,3	26	22,2	6	J	DT100, DT90 DF40, DF50, DF60, DF70, DF80, DF90	17461-87E00 17461-87E11 17461-87E12 17461-87E10
REC17461-93J00	500393	87	39	24,3	5	J	DF150, 175, 200, 225, 250	17461-93J00
REC17461-92D02	500319	42	20	12,3	6	J	DT8C/9.9C	17461-92D02
REC17461-90J01	500367	87	31,5	24,2	5	J	DF100A, DF115A, DF140A, DF140, DF150AP, DF175AP, DF150T, DF175T	17461-90J01 17461-90J00
REC17461-93004	500398						DT9.9, DT14, DT16, DT25, DT28	



REC47-899837



REC17461-93903



REC17461-98503



REC17461-95300



REC17461-94700



REC17461-96312



REC17461-87E12



REC17461-93J00



REC17461-92D02



REC17461-90J01



REC17461-93004

TOHATSU



REF	CEF	A (mm)	B (mm)	C (mm)	PALAS BLADE PALE	CASQUILLO KEY TYPE CHIAVETTA	HP	TOHATSU
REC3B2-65021-1	500344	40	18	12,10			6, 8, 9,8	3B2-65021-1
REC47-161543	500377	33,6	14,3	10,25	6	P	2, 2.5, 3.5, 4, 5, 6	369-65021-1
REC3C8-65021-2	500379	50,4	20,15	17,2	6	J	40, 50	3C8-65021-2
REC345-65021-0	500382	44,1	20,25	17,12	6	J	25, 30, 35	345-65021-0
REC334-65021-1	500383	40,7	23,35	13,96	8	J	9.9, 15, 18, 20	334-65021-0
REC3B7-65021-2	500388	67,40	35,10	20,15			60, 70, 90, 115, 120, 140	3B7-65021-1



REC3B2-65021-1



REC47-161543



REC3C8-65021-2



REC345-65021-0



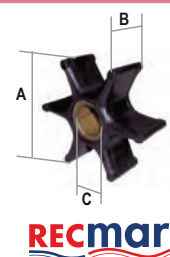
REC334-65021-1



REC3B7-65021-2

YAMAHA

REF	CEF	A (mm)	B (mm)	C (mm)	PALAS BLADE PALE	CASQUILLO KEY TYPE CHIAVETTA	HP	YAMAHA
REC6G1-44352-00	500302	40	18	11,9	6	J	6, 8HP	6G1-44352-00
REC6H3-44352-00	500316	51,8	19,05	18,05	6	J	40, 50, 55, 70HP	6H3-44352-00 697-44352-00
REC682-44352-01	500320	40	22	13	6	J	9,9, 15HP	682-44352-01
REC662-44352-01	500321	40	22	14	6	J	6, 8 HP	662-44352-01
REC6L5-44352-00	500322	36	14,5	9,9	6	J	F2.5A, 3A Malta	6L5-44352-00
REC688-44352-03	500323	58	30	20,1	6	J	75, 85, 90 HP	688-44352-03
REC646-44352-01	500324	47,5	13,7	11,15	6	J	2HP	646-44352-01
REC6E0-44352-00	500325	40	12,6	11	6	J	4HP	6E0-44352-003
REC689-44352-02	500326	69,5	12,8	16,15	6	J	25-30 HP	689-44352-03
REC6F5-44352-00	500352	69,8	22,1	16,04	6	J	40 HP	6F5-44352-01 676-44352-00
REC63V-44352-01	500363	53	14	12,85	6	J	8, 9,9, 15 HP	63V-44352-01
REC67F-44352-00	500364	58,2	34,7	20	6	J	80-100 HP	67F-44352-01
REC68T-44352-00	500368	52,8	14	11,7	6	J	F6A, 6B, F8C	68T-44352-00
REC6E5-44352-01	500371	89	31	22,45	6	J	115, 150, 225, 250 HP	6E5-44352-03
REC6L2-44352-00	500384	51	19	14,1	6	J	20D, 25N	6L2-44352-00
REC6H4-44352-02	500385	51	19	16,1	6	J	25, 30, 40, 5HP	6H4-44352-01 676-44352-01



RECMAR



REC6H4-44352-02



REC6G1-44352-00



REC6H3-44352-00



REC682-44352-01



REC662-44352-01



REC6L5-44352-00



REC688-44352-03



REC646-44352-01



REC6E0-44352-00



REC689-44352-02



REC6F5-44352-00



REC63V-44352-01



REC67F-44352-00



REC68T-44352-00



REC6E5-44352-01

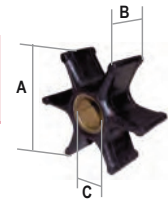


REC6L2-44352-00



CÁMARA MOTOR / CASCO • ENGINE CAMERA / HULL • CAMERA MOTORE / SCAFO

RECAMBIO
MARINOS



REF	CEF	A (mm)	B (mm)	C (mm)	PALAS BLADE PALE	CASQUILLO KEY TYPE CHIAVETTA	JABSCO	JOHNSON	SHERWOOD	VETUS	VOLVO	YANMAR	MERCRUISER
REC3586494	500100	40	19,2	9,5	6	I	4528-0001	09-806B	9979K	501	803729 875807-0 3586494	104211-42070	
REC653-0001	500101	51	22	12	6	I	653-0001 18653-0001	09-810B		801		128990-42200	
REC4598-0001	500102	65	51	16	8	J	4598-0001 4599-0101		10187K 12338K		818680 14320/620 835512		
REC3854286	500103	62	31,8	16	12	J	18838-0001	09-701B-1	09959K		3854286 876120-7 834794 875736		
REC22120-0001	500104	57	50	16	12	K	22120-0001				875660 2430184 807904		
REC836-0001	500105	95	63	25	9	K	836-0001	09-1029B		901	2170344 877061		
REC21730344	500105T						12	K			2170344 877061		
REC3841697	500106	65	50	16	8	K	920-0001	09-1028B	18200K	301	875593 3841697 3862281 877400 875811-2	127610-42200	34765A1
REC21213660	500107	57	31,5	16	12	K	1210-0001 3085-0001	09-1027B		201		129470-42351	
REC47-59362Q01	500109	66,5	50,6	16,9	8	H						47-59362Q01	
REC1411-0001	500113	31,3	12	8	6	H	1411-0001 21414-0001 14792-0001					128176-42071	
REC17937-0001	500114	65	50	16	10	K	17937-0001	1028B	18200		3588475 877061 801277		
REC6760-0001	500115	95	88,5	25	9	K	6760-0001	09-802B			844683 875808		
REC3593659	500116	51	22	12,7	6	I	673-0001	09-1026B		IMP 00901	3593659 3596497 22222936		
REC10615K	500120	65	41,5	16	12	J	18948-0001	09-702B	10615K		835874 875583		
REC3586496	500121	40	19,2	12	6	I	22405-0001	09-808B 09-45589		601	833995 21951342 3586496		
REC13554-0001	500124	57	48,2	16	12	K	13554-0001	09-812B				119773-42600-01	
REC22779-0001	500129	51	22	12,7	6	J	22799-0001			101		124223-42090	
REC18777-0001	500133	57	50	16	10	K	18777-0001						
REC21730344	500135	95	63	25	12	K	17935-0001	09-819B			877066 21951362		
REC6303-0001	500138	51	22	8	6	H	6303-0001	09-824P					
REC18789-0001	500144	117,6	88,9	25	9	K	17240-0001 18789-0001						
REC875697	500145	95	88,5	25	12	K	17936-0001 21676-0001	09-814B			875814 /697 219513644 845796 844683 842857	16500-32570	
REC17370-0001	500152	95	88,5	25	12	M	17370-0001						
REC18786-0001	500153	117,6	88,9	25	9	M	18786-0001						
REC11979-0001	500155	65	36,5	16	8	K	11979-0001						
REC47-862232A2	500159G	66,5	50,6	11,4	8	M							47-862232A2 47-8M0104229 47-831311350 47-89866T
REC47-809866T	500161	65	68	16	10	K	31130-0061					119593-42200	
REC3887761	500162	65	80	25	12	K		09-821B			21951358 3887761		
REC119574-42550	500162G						12	K				119574-42550 / 52	
REC17000K	500164	82,5	73,5	20	12	J	18958-0001		17000K				
REC09000K	500165	62	22	16	12	J			9000K			128620-42201	
REC10077K	500166	57	20	12,7	12	J			10077K				
REC15000K	500167	65	51	16	12	J	18327-0001		15000K				
REC875575	500170	57	31,5	16	12	J	4568-0001	09-801B			875575 21951350 831182 3583602 3593573 3588476 38.194.86 3842786 21213664 21951352 3593660 2121794	145410-46090 124310-46090	
REC3593573	500177	65	76	16	8	K	17018-0001B						
REC21213664	500178G	57	48,2	14,3	12	K							
REC22000K	500179	114	109	25	10	K			22000K				
REC27000K	500181	82,5	73,5	20	12	k			27000K				
REC18000K	500182	95	102	25	12	K			18000K				
REC09-820B	500186	95	130	25	12	K		09-820B					
REC08000K	500190	40	19,2	12	6	H			8000K				
REC29000K	500192	95	102	25	12	K			29000K				
REC653-0001	500201	51	22	12	6	I	653-0003 4528-0003 23099-0003 920-0003	09-810B-9					
REC3841697	500206	65	50	16	8	K	964-0003 1111-0003 17992-0003	09-1028B-9					
REC21213660	500207	57	31,5	16	12	K	1210-0003 3085-0003	09-1027B-9					
REC3593659	500216	51	22	12,7	6	I	673-0003	09-1026B-9					
REC6303-0001	500238	51	22	8	6	H	6303-0003	09-824P-9					
REC31500-0001	128	101,5	36	12	K	K	31500-0001						
REC47-89984T4	500313G	60	33,8	22,3	6	J							47-89984T4
REC47-43026Q02	500301	89	32,5	22,4	6	J							47-43026Q02

