

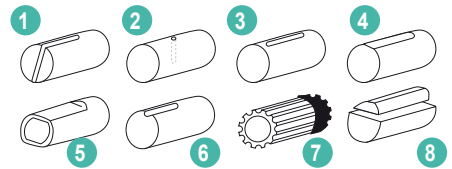
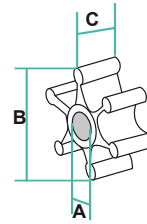
IMPULSORES

IMPELLERS

GIRANTE

TURBINE

REF	OEM	PALAS BLADES PALE PALES	CASQUILLO BUSHING BOCCOLA BAGUE	A (mm)	B (mm)	C (mm)
JAB11979-0001	CHRYSLER	8	7	16	65	36,65
JAB12104-0001	YANMAR 128170-42070	6	2	8	32	12
JAB14750-0001		8	4	8	32	12
JAB14750-0003		8	4	8	32	12
JAB17018-0001	MERCUISER DIESEL VOLVO 3583602 CATERPILLAR 3N5895 DDA 8927570	8	7	16	65	76,2
JAB17370-0001	CUMMINS 3008503 CATERPILLAR 3N-4859 VOLVO 801277, 825941, 877061-2	12	5	25	95	88,9
JAB17937-0001-P	CATERPILLAR 7C-3286 YANMAR 127610-42200 PERKINS 0460024, 24880031	10	7	16	65	51
JAB17938-0001-P	VOLVO 3830663	12	7	25	95	95
JAB17956-0001		10	6	16	65	51
JAB18777-0001-P		10	7	16	57	51
JAB18786-0001		9	5	25	118	88,9
JAB18789-0001		9	7	25	118	88,9
JAB3085-0001	CHRIST-CRAFT FORD 18830-1020, 18840-1010 PERKINS USA 24880190	10	7	16	57	31,5
JAB30919-0001		12	5	20	77	76,2
JAB4527-0001		6	2	8	51	22
JAB5616-0001	WESTERBEKE 5320-0011	6	6	12,7	51	22



GUÍA IMPULSORES

IMPELLERS GUIDE

GUIDA GIRANTE

GUIDE TURBINE



PIN DRIVE

PALAS BLADES PALE PALES	 (mm)			RECMAR	CEF	JOHNSON	SHERWOOD	JABSCO	VOLVO	MERCURISER	YANMAR	VETUS	PERKINS	SOLE Diesel	NANNI Diesel	ONAN	WESTERBEKE
	A	B	C														
6	9,54	39,6	18,94	REC3586494	CEF500100GX	JOH09-806B	9979	4528-0001-P	3586494		104211-42071	IMPO0501	24880272			132-0859	
6	9,54	39,6	18,94	REC3586494	CEF500200GX	JOH09-806B	9979	4528-0001-P	3586494		104211-42071	IMPO0501	24880272			132-0859	
6	10	39,6	19,2		CEF500131X									321.11.008			
6	12	39,6	19,2	REC3586496	CEF500121GX	JOH09-808B		22405-0001	3586496			IMPO0601			434013	132-0310	32620
6	12	52	25		CEF500123X									312.11.008			
6	12,17	50,8	22,1	REC653-0001	CEF500101X	JOH09-810B		653-0001			128990-42200	STM8061			434014		33636
6	12,17	50,8	22,1	REC653-0001	CEF500201	JOH09-810B		653-0001			128990-42200	STM8061			434014		
6	12,66	50,8	22,1	REC3593659	CEF500116GX	JOH09-1026B		673-0001	3593659	47-810567		IMPO0901	24880194				34440
6	12,66	50,8	22,1	REC3593659	CEF500216	JOH09-1026B		673-0001	3593659	47-810567		IMPO0901	24880194				34440
10	12,17	51,8	22		CEF500146X			18653-0001-P				IMPO0701					
10	12,66	51,8	22		CEF500156GX			18673-0001									



SPLINE

PALAS BLADES PALE PALES	 (mm)			RECMAR	CEF	JOHNSON	SHERWOOD	JABSCO	VOLVO	MERCURISER	YANMAR	PLEASURECRAFT	CATERPILLAR	CUMMINS	MAN	
	A	B	C													
8	14,29	58,65	36,65	REC11979-0001	CEF500155			JAB11979-0001								
8	14,29	65	50,2	REC3841697	CEF500106GT	JOH09-1028B		920-0001	3841697	47-801332602	127610-42200	R061003E	3N1906	650607	50.06506.0091	
8	14,29	65	50,2	REC3841697	CEF500206	JOH09-1028B		920-0001			127610-42200	R061003E	3N1906	650607		
8	14,29	65,2	76,65	REC3593573	CEF500177GT			JAB17018-0001	3593573	47-816814T			3N5895			
9	22,5	95	88,5	REC6760-0001	CEF500115T	JOH09-802B		6760-0001								
9	22,5	96	63,1	REC836-0001	CEF500105T	JOH09-1029B		836-0001	21730344				1L4774	556540		
9	22,5	96	63,1	REC836-0001	CEF500205	JOH09-1029B		836-0001	875736				1L4774	556850		
9	22,5	117,6	88,5	REC18789-0001	CEF500144			JAB18789-0001								
10	14,29	65	50,1	REC17937-0001	CEF500114T		18200	JAB17937-0001-P	3588475	47-8013326-01						
10	14,29	65	50,1	REC17937-0001	CEF500214		18200	JAB17937-0001-P		47-8013326-01						
10	14,29	65	68,2	REC47-809866T	CEF500161			31130-0061		47-831311350	119593-42202					
10					CEF500172			DEV4307								
12	14,29	57	31,6	REC21213660	CEF500207	JOH09-1027B		1210-0001	21213660		129470-42532	R061003				
12	14,29	57	48,2	REC13554-0001	CEF500124	JOH09-812B		13554-0001			119773-42600					
12	12,29	57	48,2	REC21213664	CEF500178G				21213664							
12	14,29	57	50,2	REC22120-0001	CEF500104			JAB18777-0001-P	876120							
12	14,29	57,15	48,25		CEF500150			13554-6001								
12	22,5	65,8	80	REC3887761	CEF500162G	JOH09-821B			3887761		119574-42552				51.06506.0103	
12	22,5	95	63,1		CEF500135	JOH09-819B		17935-0001	21951362				5N9360			
12	22,5	95	88,5	REC875697	CEF500145T	JOH09-814B		17936-0001	21951364		165000-35270		4L8470		50.06506.0089	
12	22,5	95	95		CEF500163G			JAB17938-0001-P	3830459							
12	22,5	96,5	130	REC09-820B	CEF500186T	JOH09-820B										51.06506.0106
12						JOH09-842B										51.06506.0127

PALAS BLADES PALE PALES	 (mm)			RECMAR	CEF	JOHNSON	SHERWOOD	JABSCO	DETROIT	VETUS	PERKINS	SOLE D	YAMAHA	RENAULT	ONAN	WESTERBEKE
	A	B	C													
8	14,29	65	50,2	REC3841697	CEF500106GT	JOH09-1028B		920-0001	5193602		460024	347-11-008		RC320D		
8	14,29	65	50,2	REC3841697	CEF500206	JOH09-1028B		920-0001	5199148		24880031					
9	22,5	96	63,1	REC836-0001	CEF500105T	JOH09-1029B		836-0001	5193553	IMPO0901	460027					
9	22,5	96	63,1	REC836-0001	CEF500205	JOH09-1029B		836-0001	5193553	IMPO0901	460027					
10	14,29	65	50,1	REC17937-0001	CEF500114T		18200	JAB17937-0001-P		IMPO0301						
10	14,29	65	50,1	REC17937-0001	CEF500214		18200	JAB17937-0001-P		IMPO0301						
12	14,29	57	31,6	REC21213660	CEF500207	JOH09-1027B		1210-0001	5194205	IMPO0201	460038	351-11-008			131-0050	302571
12	14,29	57	48,2	REC13554-0001	CEF500124	JOH09-812B		13554-0001					GTA-12457-00			
12	22,5	65,8	80	REC3887761	CEF500162G	JOH09-821B										
12	22,5	95	63,1		CEF500135	JOH09-819B		17935-0001	8924838		7054					
12	22,5	95	88,5	REC875697	CEF500145T	JOH09-814B		17936-0001	5196168	IMPO0801	460027					



KEY DRIVE

PALAS BLADES PALE PALES	 (mm)			CEF	VOLVO
	A	B	C		
12	10	39,6	14,3	CEF500380	3555413



SPECIFIC DRIVE

PALAS BLADES PALE PALES	 (mm)			RECMAR	CEF	OMC
	A	B	C			
10	12,76	85,5	40,41	REC777128	CEF500317	777128



KEY DRIVE

PALAS BLADES PALE PALES	 (mm)			RECMAR	CEF	JOHNSON	SHERWOOD	JABSCO	VOLVO	MERCURISER	OMC	CRUSADER	CHRIS-CRAFT	PLEASURECRAFT	YANMAR	CATERPILLAR
	A	B	C													
	6	12,75	50,8													
8	15,9	65	50,2	REC4598-0001	CEF500102T		10187	4598-0001	818680							
8	15,9	65	50,2	REC4598-0001	CEF500202		10187	4598-0001	818680							
8	15,93	65,2	50,2		CEF500160			4599-0101								
8	15,95	62,2	22,4	REC09000K	CEF500165		SHE09000K								128620-42200	
12	12,8	56,6	19,8		CEF500166		SHE10077K						16.80-90047			
12	15,9	62	31,7	REC3854286	CEF500103T	09-701	SHE09959K	18838-0001	3854286	3854286	1003026			R061015		
12	15,9	65,2	41,3	REC10615K	CEF500120T	09-702	SHE10615K	18948-0001	835874		981939	20300	16.80-90131	R061017		
12	15,93	57	31,6		CEF500208			4568-0003								
12	16	57	31,6	REC875575	CEF500170CG	JOH09-801B		6174-0001	875575						145410-46090	
12	16	65	51,2	REC15000K	CEF500167		SHE15000K	18327-0001		47-853126						
12	20,1	84	73,5	REC17000K	CEF500164T	09-704	SHE17000K	18958-0001								1W5664

PALAS BLADES PALE PALES	 (mm)			RECMAR	CEF	JOHNSON	SHERWOOD	JABSCO	CUMMINS	VETUS	PERKINS	YAMAHA	RENAULT	ONAN	WESTERBEKE	KOHLER
	A	B	C													
	6	10	50,8													
6	12,75	50,8	22,1	REC22779-0001	CEF500129	09-827		22779-0001		IMP00101						229955
8	15,95	62,2	22,4	REC09000K	CEF500165		SHE09000K								302875	229826
8	17	65	48,6		CEF500122T								48300008			
8	17	66	32		CEF500128								48300007			
12	12,8	56,6	19,8		CEF500166		SHE10077K							132-0375	33112	
12	15,9	62	31,7	REC3854286	CEF500103T	09-701	SHE09959K	18838-0001			NA900010	10103-100C		132-0317	33104	
12	15,9	65,2	41,3	REC10615K	CEF500120T	09-702	SHE10615K	18948-0001	3908220		NA900012	6TA-12457-00		132-0349	33779	
12	15,93	57	31,6		CEF500208			4568-0003								
12	20,1	84	73,5	REC17000K	CEF500164T	09-704	SHE17000K	18958-0001	3802444							



SINGLE FLAT DRIVE

PALAS BLADES PALE PALES	 (mm)			RECMAR	CEF	JOHNSON	SHERWOOD	JABSCO	MERCURISER	YANMAR	ONAN	KOHLER
	A	B	C									
	6	7,31	50,8									
6	7,31	50,8	22,1		CEF500210	09-824		6303-0003				
6	7,31	51,3	22		CEF500138	09-834		6303-0001				
6	7,31	51,3	22		CEF500238	09-834		6303-0001				
6	7,4	35,4	12,8		CEF500284G	09-1077						
6	8	44,6	13		CEF500132	09-1052B-9						
6	8	44,9	13		CEF500232	09-1052-S9						
6	8	31,3	11,9		CEF500113			21411-0001		128176-42071		
6	8	31,3	11,9		CEF500213			14787-0003				
6	8	31,75	12		CEF500230			1414-0003				
6	12,2	19	40	REC08000K	CEF500190G		SHE08000K				132-0415	359978
6	22,3	60	33,8	REC47-8998474	CEF500313G				47-8998474			
6	22,4	89	32,5	REC47-43026Q02	CEF500301				47-43026Q02			
8	16,85	66,5	50,6	REC47-59362Q01	CEF500109			17954-0001-P	47-59362Q01			
10	16,85	65	50,7		CEF500148			17954-0001				



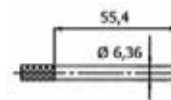
DOUBLE FLAT DRIVE

PALAS BLADES PALE PALES	 (mm)			RECMAR	CEF	JOHNSON	JABSCO	MERCURISER	CATERPILLAR	CUMMINS	DETROIT
	A	B	C								
	8	11,4	66,5								
9	20,2	117,6	88,5	REC18786-0001	CEF500153		JAB18786-0001		PP1027		23502086
10	13,42	57,18	50,25		CEF500157		50461-1001				
11	25,4	94	63		CEF500185	09-0838S					
12	20,2	95	88,5	REC17370-0001	CEF500152		JAB17370-0001		3N8459	3008503	8927570



PULLER DRIVE

PALAS BLADES PALE PALES	 (mm)			RECMAR	CEF	SHERWOOD	YANMAR	CATERPILLAR	CUMMINS
	A	B	C						
	10	20,7	114,3						
10	24,35	114,3	109,5		CEF500193GX	SHE30000K			
12	16,1	84	73	REC27000K	CEF500181G	SHE27000K			3974456
12	20	94,5	79,8		CEF500183G	SHE26000K			3972366
12	20	94,5	101,5	REC29000K	CEF500192GX	SHE29000K	128620-42201	2968388	
12	20,7	94,5	101,5	REC18000K	CEF500182G	SHE18000K		1095327	4019403



PALAS BLADES PALE PALES	 (mm)			CEF	JABSCO
	A	B	C		
	6	39,1	18,9		